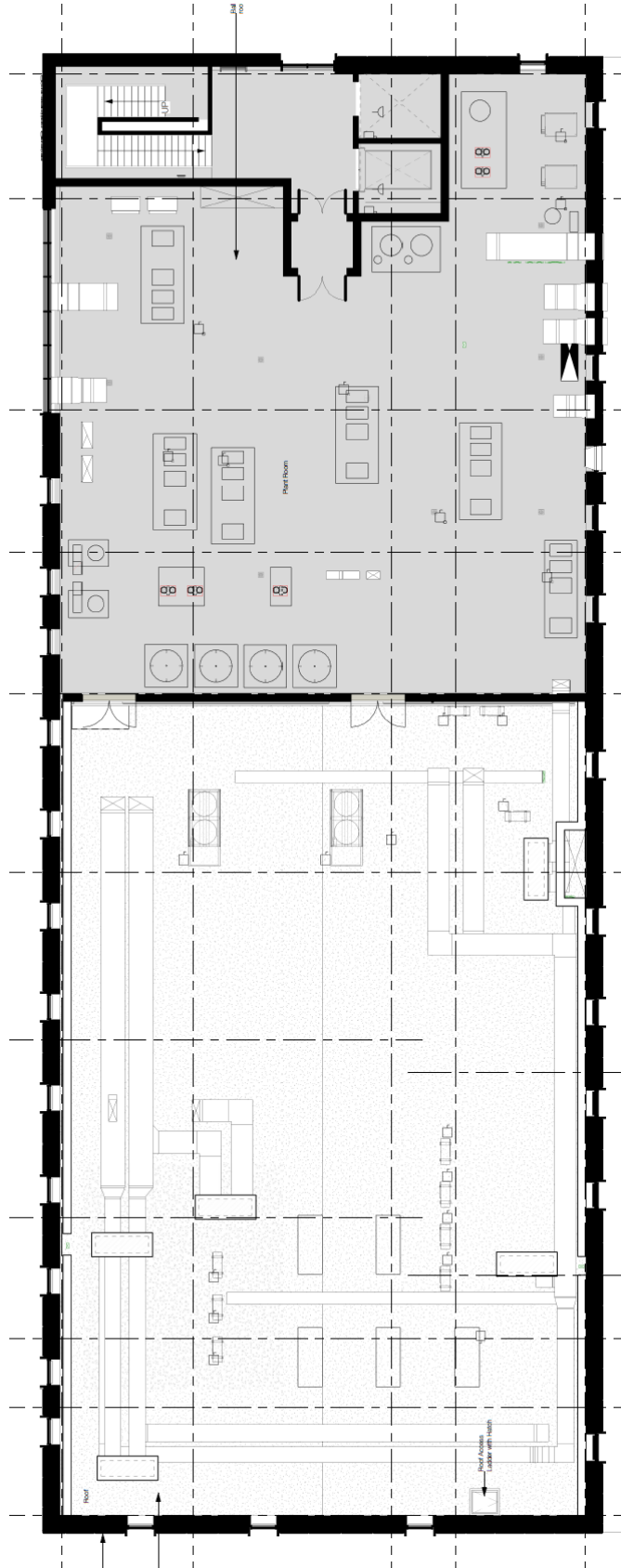


APPLICATION 23/0975/REM  
APPENDIX 9 - PROPOSED FLOOR PLAN - LEVEL R1



Castlegate Shopping Centre, High Street, Stockton-on-Tees  
Reserved matters application with all matters reserved for phase 1 for the erection of a Community Diagnostics Centre building to include substation and associated hard and soft landscaping, parking, cycle store, vehicular access, highway alterations and servicing provisions